



# THE LANDFALL VOICE

VOLUME 29, ISSUE 5

OFFICIAL PUBLICATION OF THE LANDFALL COA

DEC - JAN 2019

## Inside this Issue

Security News	2
Record Rainfall	2
Maintenance Update	3
COA Committees	3
Info Request	4
Tree Pick Up	4
Annual Meeting	4
Visitor Barcodes	4
ARC Update	4
Property Transfers	5
Club Usage	5
Swan Rescue	6
COA Application	7
Chapel Caroling	8
Landfall Facts	8

## A Message from Your COA Board Chair

by Mary McKenna

I hope everyone had a **peaceful** Thanksgiving holiday. It feels like we have many reasons to be thankful as we recover from Landfall's worst natural disaster in our thirty year history. While we suffered significant damage, **we are thankful** that no one was seriously injured during Hurricane Florence. We are thankful Landfall is well on its way to both personal and community restoration while much work has been accomplished in the common areas there remains work to do that will take us well into spring.

We are thankful to have seen the **amazing support** that our residents have given both to each other, as well as to our hard working COA staff. Through the **generosity** of Landfall residents our staff were well fed for over a month as they worked long hours seven days a week to keep us safe and return our community to pristine conditions. In addition, financial assistance was provided to over forty employees who suffered personal storm related damage/loss through the gift card donation program.

Thanks to all of you who helped with these endeavors. **Staff are very appreciative and**

**morale remains high.**

We are thankful the majority of residents have paid the special assessment promptly which was needed to cover debris removal, repairs to the storm water system, and roads. In addition, we had damage to street lights, fencing, irrigation, and landscaping.

The Board has tried to keep you informed and will continue to send periodic updates regarding the work progress as well as how your assessment funds are being spent. The Board is aware a small percentage of owners have expressed concerns about our handling of the hurricane restoration process and expenditures. Please know the Board has closely monitored all work and expenditures and is pleased with staff preparation and ongoing work. For your information the Board has authorized an independent audit be performed at the conclusion of storm related work—sometime next year. The results will be available to you at that time.

**Best wishes for a joyful holiday season.**



## COA Holiday Office Schedule

The COA office will be closed at 12:00 p.m. on Monday, December 24, and will reopen on Wednesday, December 26 at 8:00 a.m. The COA office will also be closed on Tuesday, January 1, 2019 for the New Year's Day holiday and will reopen on Wednesday, January 2.

Please plan ahead for guests and arrange for your guest entry by calling 910-256-5311.

The COA wishes you a happy and safe holiday season!

## Waste Industries

Trash pickup will be on Monday, December 24 and Monday, December 31, 2018. Also, regular pick up on Thursday December 27 will be moved to Friday, December 28. Thursday, January 3 will be moved to Friday, January 4, 2019.

Waste Industries has asked that you please do not place grocery bags into your recycling containers. Please recycle grocery bags at your local grocery store.

# Security News

by Chris Adam, Chief of Security

Now that the holidays are upon us, we have noticed an **increase of guests** coming in and out of Landfall. It is very important to make sure you are **calling your guests in ahead of time** to avoid long lines at the gates. Please note that the Drysdale entrance is manned Monday through Saturday from 6 a.m. to 6 p.m. Outside of these hours, the gate will only operate for barcoded vehicles. Please advise your guests of this to help prevent delays and potential gate strikes. This will help create an easy and welcoming experience for your guests.

During this time, we want to remind everyone of some of our rules and regu-

lations. Please ensure that your guests are aware that our **speed limits** are enforced. The Landfall Council of Associations Rules and Regulations states on Page 12, Paragraph 1, that all N. C. Motor Vehicle Laws will be enforced while driving in Landfall. Security is constantly on the lookout to ensure the rules and regulations are being followed for the safety of all.

During the holidays, we know that some of our residents go out of town to visit family and friends. Do not forget to **sign up for house checks** so we can watch over your home while you are away. In order to be on the list for house checks

you must fill out our house check form and turn it in to the COA office or one of our gates on your way out. Please make sure you are filling out the sheet with an emergency contact should we need to reach out to you while you are away. We would also like to remind everyone to make sure they are **locking their homes and vehicles** and not leaving valuables in plain sight. We hope you all enjoy this time with your loved ones and from all of us at Landfall COA we hope you have a wonderful holiday and a happy new year!



**STAY SAFE DRIVERS! BE CAREFUL- AT INTERSECTIONS!  
COME TO A COMPLETE STOP-LOOK BOTH WAYS!!**

## Record Rainfall Observed in Wilmington During 2018

by Steven Pfaff, National Weather Service Wilmington NC

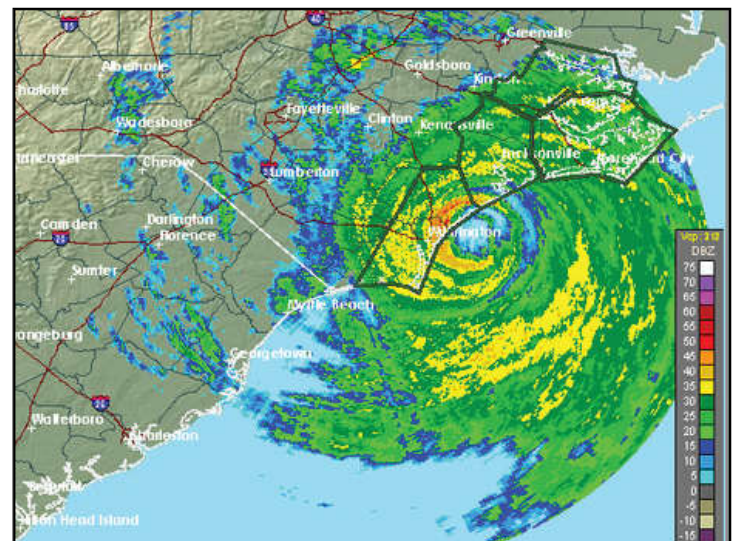
A variety of storm systems from nor'easters to hurricanes and summer-time thunderstorms yielded prolific rainfall across the area during 2018. In fact, clusters of showers and thunderstorms associated with an area of low pressure on Saturday November 24th produced heavy rainfall with 1.64 inches observed at the Wilmington International Airport. This rainfall amount broke the record for the date – which was 1.16 inches previously set in 1983.

The spate of heavy rainfall events throughout the year, especially during July and September, yielded over 95 inches for the year thus far. The previous record was 83.65 inches in 1877. In fact, this year has been so wet that the old record was exceeded on Sunday September 16, 2018. The Wilmington area normally receives 57.61 inches annually, and the rainfall surplus is 37.66 with the entire month of December remaining. If the jet stream remains active and supports the development of additional storms through the end of the year then it is quite possible that the area could receive 100 inches!

The big story for year was Hurricane Florence. The storm made landfall near Wrightsville Beach, NC on Friday September 14, 2018 and very slowly meandered across Brunswick County and northeast South Carolina over the next couple days. As a result, bands of deep tropical moisture on the east side of the storm were directed over the area for an extended period. Rainfall amounts from the storm ranged from 20 to 30 inches over a large area of the region, and in some cases several rain gauges measured over 30 inches. The WSR-88D radar in Shallotte, NC is capable of estimating rainfall and when combined with other sensors can generate detailed rainfall maps. This Multi-Sensor Precipitation Estimate product indicated that a swath of 40 to 50 inches of rain fell across portions of

southeast Brunswick County!

Hurricane Florence (image) was also the latest in series of devastating flood events to impact the Carolinas. Hurricane Floyd led this procession of deadly flood events in 1999, and was followed by a tropical storm moisture plume in Oct 2005, the “Tropical Fire Hose” event in September 2010, the Historic SC Flood event of October 2015 (moisture feed from Hurricane Joaquin), and Hurricane Matthew 2016.



# Maintenance Update

by Steve Hughes, Chief of Operations

Happy holidays to everyone! I know many of you still have not fully recovered from Hurricane Florence as many of us have not. I will do my best here to update you on the status of the COA common area clean up as we are moving along trying to get Landfall back to pre-storm conditions. We are reaching out again to the couple of dozen **vacant lot owners** who still need to have their properties cleared of downed vegetation and limbs. Hopefully, the lots will be cleaned up in a short period of time.

**Road repairs** have been delayed by the early season cold weather. We need a week or more of 65 degree temperature days to finish the overlays. These may carry on to 2019.

**Storm drain repairs** are on the final leg and will hopefully be wrapped up by the end of the year. There are still many large trees in the storm drainage areas that must be removed and this will be an

ongoing process into 2019.

We have started replacing many of the sections of **fences** that were damaged by the storm in house. Many hundreds of feet of chainlink fence are awaiting contractor repair.

**Facility repairs** that will continue in to the 1st quarter of 2019 include building roofs and exterior and interior walls. Our streetlights have begun to arrive from the manufacturer. Unfortunately, there was a minor glitch in the light fixture that we are in the process of ironing out. Hopefully, you will notice the new lights going up in the next week or two.

Once again a reminder to residents who utilize the **nature trails** that the Spanish Wells section of the trail is still closed and will remain closed until further notice. The **city of Wilmington** has removed approximately 50% of the storm debris from the Landfall staging area with expected completion after the 1st of the

new year.

**Landscape and redesign of the common area landscape** beds still needs to be completed. We look forward to seeing that done in the next couple of months.

At the time of this writing the rain gauge has recorded 104" of rain year to date. **We are within 10" of receiving twice the normal amount of rainfall for this area.**

I would like to thank our property owners for their outpouring of support and truly humbling generosity throughout this natural disaster. I cannot tell you how much the team and I have appreciated it. Once again, happy holidays and please travel safely.



## THE COA NEEDS YOU! ....TO SERVE ON ONE OF THE STANDING COMMITTEES! APPLICATIONS NOW BEING ACCEPTED!

The COA currently has a great group of volunteers working on the standing committees that include: Buildings and Grounds, Nominating, Covenants and Security, Architectural Review, Communications or one of the event committees for Fourth of July. In March, some volunteers will have fulfilled their three year terms, which will result in committee vacancies. Please consider serving on a COA Committee.

Committee descriptions are included below. If you are interested in joining a committee, an application has been included on page 7 and also available at [www.landfall.org/admin](http://www.landfall.org/admin) OR you may pick one up at the COA office on Drysdale Drive. The COA staff and your neighbors look forward to working with you to continually keep Landfall a special community. If you have any questions, please contact the COA Office at 910-256-7651 or email [coa@landfall.org](mailto:coa@landfall.org).

### ARCHITECTURAL REVIEW:

- Reviews/approves plans & specifications for structures & landscapes and enforces design guidelines.

### COMMUNICATIONS:

- Alerts community about current events, concerns and civic issues.
- Solicits articles for and publishes The Landfall Voice.

### COVENANTS AND SECURITY:

- Responsible for enforcing the rules and regulations pertaining to the Covenants.
- Establish procedures for dealing with violations and conflicts.
- Assess security programs/procedures.

### BUILDINGS AND GROUNDS:

- Advises and recommends improvements of common areas and facilities.

### NOMINATING:

- Seeks to fill all COA Committee vacancies.
- Assist with recommendations to fill Council vacancies.

**BIKERS, WALKERS & RUNNERS!  
WEAR BRIGHT COLORS OR REFLECTIVE GEAR ON ROADS!  
USE A LIGHT TO BE VISIBLE IN LOW LIGHT!**



## Information Update

The COA needs your updated contact information. If you have changed any of your contact information such as:

- Mailing Address
- Telephone #
- E-mail

Please notify the COA at 910-256-7651 or e-mail [coa@landfall.org](mailto:coa@landfall.org). Thank you!

## Tree Pickup

The COA Maintenance department will begin early morning tours to pick up Christmas trees near road right of way on January 2 and will continue pick up until February 1. If pick up of your tree is missed, please call COA Maintenance at 910-256-7604.

## Save The Date

Landfall COA Annual Meeting

March 26, 2019

at 6:00 pm

Country Club of Landfall

## Frequent Visitor Barcode Renewals

Frequent visitor barcodes are set to expire on December 31. The \$35.00 annual fee is due to renew the barcode pass for the 2019 calendar year without interruption.

Please send \$35.00 for each existing barcode already authorized along with the name of whom the barcode is to be renewed.

Make checks payable to Landfall COA and send to 1749 Drysdale Drive, Wilmington, NC 28405.

Those eligible for frequent visitor barcodes are resident status individuals, renters and immediate non-resident family members which include: spouse, parents and grandparents, children (including adopted and step) and grandchildren, brothers and sisters, mother-in-law and father-in-law, brothers-in-law and sisters-in-law, and daughters-in-law and sons-in-law.

## ARC Submittals, Hurricane Florence and the Holidays

*by Brud Deas, Architectural Review Committee Chair*

**Home Repairs** - The Architectural Review Committee continues to expeditiously review home repairs and replacements resulting from Hurricane Florence. No ARC submittal is required to make home repairs that do not alter the exterior appearance, materials or color of the home and landscaping. If modifications are desired or needed, please e-mail [arc@landfall.org](mailto:arc@landfall.org) with details of the changes. If any portion of the windows or roof material will be removed and replaced, please e-mail [arc@landfall.org](mailto:arc@landfall.org) for a submittal form. Window and roof replacements must meet the current ARC Guidelines found online at [www.landfall.org/arc](http://www.landfall.org/arc).

**Tree Removals** - With most of the damage from Hurricane Florence cleaned up and remediation underway, tree contractors have been notified that the historic rules regarding tree removal are back in place. Security won't admit tree contrac-

tors for removals unless Security has been notified that approvals by ARC for those removals are in place. For tree removals, please fill out the Modification Form available on the website, mark the trees with ribbon or string and e-mail the ARC. As we move towards the new year and spring, please take a look at your landscaping as Landfall has lost so many trees and this has altered the balance of the landscaping within the landscape beds, the lawn and the landscape plan in general.

**Play Equipment** - As the holidays approach, please keep in mind that the ARC must review and approve in advance play equipment such as swing sets, trampolines or basketball goals which are a common gift of the season. Final approval by the ARC must be received in writing prior to the placement or installation of the play equipment.

The following must accompany the

submittal:

- The Modification Form available on page 33 of the ARC Guidelines or visit [www.landfall.org/arc/](http://www.landfall.org/arc/)
- Site plan showing the location of the play equipment in relation to the home foundation and lot lines, as well as existing and any new landscaping that may be needed to screen the play equipment from the neighbors, golf course, street or common areas such as ponds
- Play equipment dimensions
- Colors, materials and details along with a brochure or photos of the equipment

The Committee may also request that the location of the play equipment be staked and strung for onsite review. E-mail [arc@landfall.org](mailto:arc@landfall.org) for more information and the holiday ARC meeting schedule or visit [www.landfall.org/arc/](http://www.landfall.org/arc/) for complete play equipment guidelines.

**DRIVERS - DO NOT EXCEED THE POSTED SPEED LIMITS**

## New Owners & Recent Transfers

### **Sean & Jane Chapman-Holt Holt**

904 Twisted Oak Place  
*Of Wilmington, NC*

### **Bruce E. & Janna Ecklund**

809 Fox Ridge Lane  
*Of Wilmington, NC*

### **Michael & Haley D'Angelo Kupferman**

1859 Senova Trace  
*Of Wilmington, NC*

### **Scott D. & Charlotte Langbeen**

918 Sun Runner Place  
*Of Mebane, NC*

### **James & Andrea Crumpton Jr.**

2216 Pinehurst Place  
*Of Raleigh, NC*

### **Anthony S. & Lia R. Marino**

900 Bedminister Lane  
*Of Mooresville, NC*

### **Jeffrey & Anna Hergenrader**

1204 Vanderhorst Way  
*Of Wilmington, NC*

### **Patrick & Tara Parnell Weaver**

1122 Arboretum Drive  
*Of Wilmington, NC*

### **Thomas M. & Gwendalyn Smyth**

1400 South Moorings Drive  
*Of Wilmington, NC*

### **Donald Timothy & Angela Moore**

1217 Great Oaks Drive  
*Of Wilmington, NC*

### **Carl D. & Jeneice R. Hanks**

2204 Deepwood Drive  
*Of Wilmington, NC*

### **Brian C. & Kathryn M. Brown**

2036 Scrimshaw Place  
*Of Ashburn, VA*

### **Thomas M. & Susan A. Hayes**

2116 Bay Colony Lane  
*Of Wilmington, NC*

### **Joseph F. & Barbara Hunt**

1835 Cricket Court  
*Of New Providence, NJ*

### **Dillon Adams & Carly Anne Manship**

2209 Moreland Drive  
*Of Chapel Hill, NC*

### **Jesse M. & Kelly W. Blanton**

1511 Landalee Lane  
*Of Wilmington, NC*

### **Alfred Snikeris**

802 Fox Ridge Lane  
*Of Wilmington, NC*

### **Peter & Holly Koeppel**

2101 Lee Shore Place  
*Of Wilmington, NC*

### **Gary D. & Marybeth Barbato**

1818 Mews Drive  
*Of Wilmington, NC*

### **Jesse M. & Kelly W. Blanton**

1136 Turnberry Lane  
*Of Wilmington, NC*

### **Richard T. & Tameeka Rodgers**

912 Arboretum Drive  
*Of Wilmington, NC*

### **William Charles & Beverly Ann Kemmer**

540 Moss Tree Drive  
*Of Wilmington, NC*

### **John E. & Natela Young**

2142 Deer Island Lane  
*Of Charlotte, NC*

### **Thomas & Karen Durst**

532 Moss Tree Drive  
*Of Wilmington, NC*

### **Barry F. & Kathryn Selig**

920 Arboretum Drive  
*Of Rockville, MD*

### **Fletcher & Janis Norris**

1249 South Moorings Drive  
*Of Wilmington, NC*

### **Michael R. & Carla Garcia-Harrell Harrell**

2004 Marsh Harbor Place  
*Of Wilmington, NC*

### **James Steven**

1733 South Moorings Drive  
*Of Raleigh, NC*

### **Christopher P. & Robin Campbell**

1149 Arboretum Drive  
*Of Sunset Beach, NC*

### **Jack C. & Seanna J. Morgan, III**

2126 Harborway Drive  
*Of Wilmington, NC*

### **Paul J. & Natalia A. Buffa**

311 Fair Lakes Drive  
*Of Wilmington, NC*

### **Thomas S. & Mary Ann Grew Soltys**

1038 Ocean Ridge Drive  
*Of Westwood, MA*



## CLUB USAGE REMINDER

The Country Club of Landfall proposed the below reminder, and asked it be disseminated to all Landfall residents. As you know, CCL is a private club and establishes rules for its property's access and use. Please observe this rule.

*Landfall residents, please be aware that the property that is owned by the Country Club of Landfall is only to be used by members and their accompanied guest. Club property includes all club house facilities, grounds, all golf courses and cart paths. The golf course, in particular, is for use by those playing golf. Any other use would be in violation of this policy. Country Club of Landfall is not responsible for any damage or injury to you or your property in violation to this policy. For safety reasons, during golfing hours anyone other than registered golfers will be asked to leave the course. Your compliance is appreciated in advance.*

# Swan Rescue



One of the many aesthetic pleasures Landfall residents get to enjoy every day is seeing beautiful **Mute Swans** swimming in the serene ponds and lakes scattered throughout our neighborhood. In August, two Mute Swans plus one of their mates were transported for care to **SkyWatch Bird Rescue & Conservation Center**, an eight-year-old nonprofit hospital and sanctuary for wild and domestic birds located in Castle Hayne, NC.

On July 30th Angee Brouse called SkyWatch's 24/7 hotline when she discovered that the female swan she named "Momma" who had lived behind her home for years with "Buddy" her mate, was critically injured by what appears to be a golf cart collision near the Marsh #7 green. A small group of SkyWatch volunteers was able to rescue Momma two days later with the aid of Landfall maintenance crew members manning a boat to prevent the bird from eluding capture in the water. At the hospital she was examined by avian expert Amelia Mason, SkyWatch's Founder and Director who is a state and federally licensed wildlife rehabilitator with over fourteen years of experience rescuing, rehabilitating, releasing, and housing all types of wild birds. Amelia discovered Momma had a dislocated elbow with a severely infected wound as well as a large necrotic open wound on her upper left chest region caused by road burn leaving a wide area of exposed muscle dangerously dried out and lacking blood flow. Momma was also significantly anemic and underweight, weighing only 8.5 pounds upon arrival when female Mute Swans should weigh about 19 pounds. She was immediately started on an aggressive rehabilitation

regimen involving antibiotics, pain medications, in-depth wound care, and tube feeding up to 5 times a day. Luckily, SkyWatch volunteers were able to transport Buddy to support Momma on her long healing journey, and he was found to have mites like her so they have both been treated for those. It is quite possible that Momma would have succumbed to starvation and infection in a very short period had the call for help not been made by Angee.

The second injured Mute Swan was a lone male that was confined to the Landfall Lake area with a pelvic injury preventing him from flying. He had a heavy limp and limited mobility, and it is possible this injury could also have been caused by a vehicle collision. Large painful sores were found on the bottom of both feet that likely came from having to walk or run on the hot sidewalk or road. He also was nearly 11 pounds underweight. This swan is being treated with anti-inflammatories, pain medication, topical foot care, and nutritional supplements. To be able to be released back into the wild, birds must be at least 95% or more back to their original condition and certain criteria for survival and physical abilities must be met to ensure their continued ability to thrive in the wild. It is too soon to tell if either of these injured swans will be able to return to the wild. At SkyWatch there are currently 12 resident Mute and Black Swans who cannot be released and enjoy a peaceful, protected "retirement" with hundreds of other aquatic birds that call the sanctuary home.

Mute Swans are an invasive species in NC because they are native to Europe and Asia. In the 1700s they were introduced mostly to the Northeast US for their striking appearance. It is impossible for these birds to thrive here long term in the wild because we lack the natural vegetation, environment, and weather that is best for them. If you like to feed waterfowl it is very important to feed them healthy foods such as mixed bird seeds, Big Strike floating fish pellets, game bird food pellets, and vegetables like spinach and let-

tuce. In winter months they need an increase in nutrients and healthy calories. It is not safe to feed them nutritionally depleted foods like bread, crackers, and corn because excessive starch gives them joint inflammation, arthritis, growth deformities, brittle bones, anemia and weakens their immune systems, all of which makes them vulnerable to disease and predators.

SkyWatch annually rescues approximately three dozen birds from Landfall such as hawks, crows, owls, woodpeckers, herons, and songbirds. SkyWatch is the only wildlife rescue in New Hanover County legally licensed for the rescue of wild birds, so if you spot an injured or orphaned bird that needs help feel free to call their hotline at-1-855-407-3728 and a volunteer will quickly be in touch. You can also visit their website [www.SkyWatchBirdRescue.org](http://www.SkyWatchBirdRescue.org) or like them on Facebook to learn more about their work and find out how to support them. SkyWatch is a 501 (c) 3 organization that is 100% run by volunteers and exists solely on donations from the public so without the continual generosity of local and regional bird enthusiasts they could not rescue over 2,500 injured birds each year. SkyWatch never turns a bird away and offers medical care 24/7 every day of the year in order to give all birds "a chance to soar once more".



**REMEMBER TO LOCK  
HOUSE AND CARS IN  
DRIVEWAYS & USE  
ALARMS**



## 2019 COUNCIL OF ASSOCIATIONS COMMITTEE APPLICATION

If you are interested in volunteering for one of the Council Committees, please fill out this form and return it to the COA, Attn: Nominating Committee.

The Nominating Committee greatly appreciates your consideration of service. We are seeking a diverse representation of property owners willing to volunteer their time, their expertise and their enthusiasm to continue to make Landfall a distinguished living environment.

Name: \_\_\_\_\_ Date: \_\_\_\_\_  
Address: \_\_\_\_\_ Tel: \_\_\_\_\_  
E-mail: \_\_\_\_\_

I am interested in serving on (choose your preference in rank order with a 1, 2, 3, etc.)

- |                                      |   |
|--------------------------------------|---|
| _____ Architectural Review Committee | _____ Ad Hoc Buildings and Grounds Committee              |
| _____ Communications Committee       | _____ Covenants and Security Committee                    |
| _____ Nominating Committee           | _____ A Special Event Committee (Such as the 4th of July) |

Please provide the following information (on this form or on an attachment):

Interests & Qualifications (e.g. Education; Prev./Current Work Exp.; Prev./Current Volunteer Exp.; Other Interests or Activities)

---

---

---

---

Why I would like to be a Committee Member

---

---

---

---

**Please return to: Landfall Council of Associations; Attn: Nominating Committee  
1749 Drysdale Drive, Wilmington, NC 28405**

***Please return by January 31, 2019***

**Carol Sing at Kenan Chapel**  
**December 16**  
**5:00 pm - 7:00 pm**

Come join us at the Kenan Chapel at Landfall on December 16th at 5 PM! We will sing traditional carols with our friends and neighbors.

Brass instrument players from the Salvation Army will perform and Santa and his elves will welcome kids of all ages.

A reception will follow at CCL with our musicians! Come enjoy this fun family holiday tradition at the Kenan Chapel!

**LANDFALL FACTS**

*Year to date as of November 2018*

Owned Lots Paying Dues .....	2000
Homes Complete .....	1743
Homes Under Construction .....	13
ARC Homes in Process .....	9
Homes for Sale .....	85
Lots for Sale .....	41
Homes Sold .....	97
Lots Sold .....	20

Editor's Note: If you have comments or suggestions about the Landfall Voice, or if you would like to be a contributor, please e-mail [coa@landfall.org](mailto:coa@landfall.org)

THE VOICE IS PRODUCED BY THE  
COMMUNICATION COMMITTEE:

JEWELL JESSUP, EDITOR  
MIKE WILLIAMS, OFFICE MANAGER  
KATHERINE MCKENZIE, COA LIAISON  
SHELLY KEARNEY, COORDINATOR