



THE LANDFALL VOICE

VOLUME 27, ISSUE 3

OFFICIAL PUBLICATION OF THE LANDFALL COA

JUNE - JULY 2016

Inside this Issue

COA Chair	2
Maintenance	2
Summer Safety	3
Snakes	3
Groovy Ground Covers	4
Fall Festival	4
Art Show	4
Egrets	5
IRT	5
Horticulture	6
Electronic Voice	6
CCL Info	7
Sharing Roads	7
Update Emails	7
Recent Transfers	8
Landfall Facts	8

July 4th - Independence Day 2016 A Special Occasion for the Entire Landfall Community

SUNDAY, JULY 3 FANTASTIC FIREWORKS SHOW

Approximately 9:15 PM - visible from the Nicklaus Driving Range

MONDAY JULY 4TH

**9:30 AM ASSEMBLE AT SUN RUNNER FOR
DECORATED VEHICLE PARADE**



10:00 AM VEHICLE PARADE

The parade will leave from Sun Runner Place at 10:00 am and will travel down Arboretum, then turn right on Pembroke Jones to Drysdale Drive to meet the kids' parade.

10:30 AM CHILDREN'S PARADE

From Drysdale Drive, the children will join the motor vehicle parade with bikes, skateboards, strollers, etc. Kids of all ages - come join the fun, dress up - wave your flags - special gift for each child!

**11:00 AM-1:00 PM KID'S GAMES & CCL
COOKOUT AT THE COA REC SITE**

Cake eating contest, inflatables, dunking machine, balloon toss, tug-of-war, face painting, Mr. Magic & Pink Peppermint the Clown.

CCL will fire up the grill for a good old-fashioned cookout, available to all for cash or member number.

Complimentary popcorn, sno-cones & lemonade will be provided.

Don't forget your American
Flags!

For sale at the COA office!

3 for \$5, 6 for \$10, 12 for \$20



CALLING ALL CARS FOR 4TH OF JULY PARADE!

Uncle Sam wants you and your decorated vehicle in Landfall's own parade of cars!

If you own a classic or antique car, Humvee, motor home, motorcycle, classic truck, funny car or any vehicle, please decorate and join in the fun of parading through Landfall on the way to the festivities at the Landfall recreation site.

The parade will assemble at 9:30 am at the Landfall Clubhouse on Sun Runner. The kids of Landfall with their decorated bikes, wagons, carriages, etc. will join the parade on Drysdale Drive at 10:30 am.

VOLUNTEERS NEEDED FOR KIDS GAMES PLEASE CALL 916.256.7051

A Word from COA Board Chair

by Mary McKenna

I would like to begin by thanking those of you who attended the March Annual Meeting. The COA staff worked hard to make it an informative and meaningful event and the **improved attendance** was much appreciated. We hope that next year will be even better!

The Board has been working on two big projects which were brought up by the audience at the annual meeting. First, is the issue of **sidewalks** along Pembroke Jones and Arboretum Drive. Many attendees were in favor and indicated that they would consider paying for the sidewalks, as it is clear that our budget could not fund a project of that magnitude anytime in the near future. In response to this interest, your Board is appointing an ad hoc committee to gather the information needed to formulate an estimate of cost and then to query the residents (probably via survey) to determine if the majority of residents are willing to fund this project. It is not a simple process; there are many hidden costs in addition to the price of cement, such as engineering, new bulkheads and retaining walls that are required in some areas to accommodate sidewalks, landscaping, street light relocation and CCL property modifications.

The second recurring issue is that many residents believe we should be receiving more city/county services in return for the large amount of **tax paid by Landfall residents**. While we do get fire and police services, we do not receive any assistance with our storm water system or road maintenance. Again, the Board is establishing an ad hoc committee to research the related issues and evaluate our options, if any, for relief.

We will keep you informed as we progress on both of these issues.

In addition to our ongoing **storm water and road maintenance projects**, we are happy to note that our white stucco perimeter walls will be repaired and renovated in the near future, enhancing the exterior appearance of our community. Work also continues on improved communication and safety / security systems, which will be detailed as implementation draws nearer.

I hope you are having a wonderful spring and enjoying all that our lovely community has to offer.

Maintenance Update

by Steve Hughes

We started the spring off warm, then cool, then warm again, and as I write this article it is a cool 57 degree morning.

With temperature fluctuations like these, our warm season grasses are having trouble coming fully out of dormancy. Our turf grass in this area looks its best around the Fourth of July. I know this sounds late, but in this part of the **transition zone**, cool season grasses actually have a longer growing season than warm season grasses. It will not be long before we are asking for a few cool mornings; unless of course you enjoy that feeling of being hit in the face with a soaking wet hot towel in the morning when walking out of the house...

Our storm water pipe repairs are moving forward, however not without a few problems. One of our 480 foot pipes had started failing to a tune of approximately \$300,000. But there is some good news! With **today's technology** we will be able to repair the total 480 feet and bring it up to a 50 year life without digging a single hole in the ground or street.

As our infrastructure ages, these types of events are not uncommon. More good news, with the cleaning and camera work we are doing, we have so far been able to **catch the problems before they become major** and

even more expensive problems.

Hopefully you have noticed our new welcoming landscape bed along Drysdale drive. A huge thank you to Jeff Humphries and his team for the awesome job!

The first stage of our **fountain installations** are now complete and are not only helping with the water quality (except for Harborway, and we continue to work on getting this pond under control) but also providing some very aesthetically pleasing scenery throughout the community not only during the day, but also at night.

Thank you so much to everyone for the continued support of our landscaping and home services. It is truly our pleasure working with each and every one of you. Also, congratulations to all our graduating scholars! Wishing everyone a wonderful and safe summer, and as always, please do not hesitate to call if I may be of any assistance to you.



Security Corner

by Russell James, Landfall Chief of Security

Lately, we have seen an increase in **gate strikes**, many of which are occurring at the Drysdale gate after hours.

- Gate strikes can result in damage to the hardware of the gate, which then must be replaced. In addition, gate strikes can result in the gate arms themselves being damaged and even needing replacement.
- We have also seen gate strikes occur when sunlight, moisture or debris was obstructing a barcode, the code reader did not read it and the driver was already trying to speed through the gate, hitting it when it did not go up.
- This can also happen if you have purchased a new vehicle, forgetting it does not yet have a sticker, or when your barcode has expired. This can also be avoided by slowing down as you approach the gate, making sure that if your barcode is not read, you do not run into the gate arm and allow for Security to assist you.
- Keep in mind that our gate system was designed for automobiles, not pedestrians and bicyclists. It is not safe for a cyclist or jogger to attempt to follow a car through the gate; it could lead to

serious injury. In the event that you are entering Landfall on foot or on a bicycle, stay clear of the gate arms and check in with the guard on duty so that they can open the gate for you. **NEVER** walk or ride under the gate arm, especially if it is in an upright position after a car has just entered.

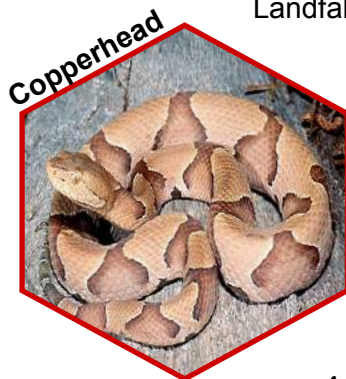
These incidents can easily be **PREVENTED** simply by slowing down, allowing the code reader to read your barcode and refraining from tailgating or following one another through the gate too closely. It is imperative when entering the gate, that you allow the gate arm to come all the way down between each vehicle.

I would also like to remind you that bicyclists are required to follow the **rules of the road**; please stop at all stop signs. A bicyclist running a stop sign could cause a serious accident and we must all share the roads to stay safe. Be reminded that bicyclists under the age of 16 must wear helmets, per North Carolina Law; this of course remains in effect within Landfall.

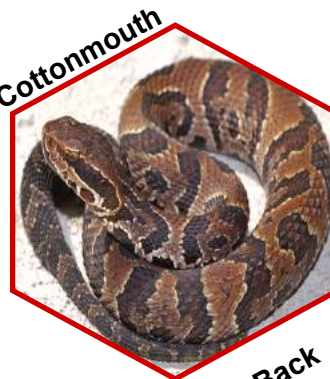
Please ensure that if you are cycling in Landfall that you are riding **with the flow of traffic** and walking or jogging against the flow of traffic, for safety purposes.

Regardless of whether you are cycling, walking or jogging, please remain in single file at all times. The roads in Landfall are simply not wide enough for pedestrians or walkers to walk more than one abreast.

While we are on the topic of summer safety, I would like to mention that the warm weather has **brought the snakes out**. There have been several sightings and removals so far this spring and there are many more to come. You can stay safe simply by being mindful while engaging in outdoor activities and especially when doing any kind of gardening or yard work. It is also highly encouraged that **garage doors** not be left open for long periods. This creates a perfect opportunity for snakes (and possibly other critters) to come in and make themselves at home, creating an unpleasant surprise for homeowners thereafter. For more information about snakes and how to identify them, see below.



Copperhead



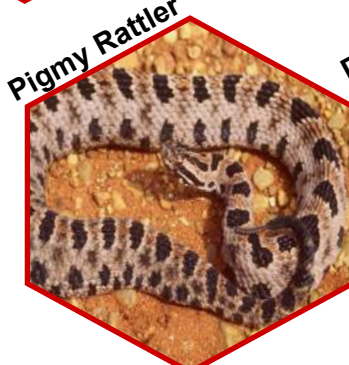
Cottonmouth



Timber Rattlesnake



Non-Venemous Garter Snake



Pigmy Rattler



Diamond Back Rattlesnake



Coral Snake

For more photos and information on snakes present in our area, please visit:
<https://www.ces.ncsu.edu/gaston/Pests/reptiles/snakepix3.html>

Groovy Ground Covers

by Shelly Kearney

Ground covers are vigorous, low-growing, ground-hugging plants which are often used in areas where turf grass is not desired or will not grow. They are typically chosen for texture, density, variation and range in height from just a few inches to knee high. Ground covers are **durable, easy to grow and attractive**. They conserve moisture, provide soil stability and improve soil structure as their leaves drop and break down in the soil. Evergreen ground covers form a dense blanket of leaves and branches to shade the soil and smother weeds year round. By filling in the gaps around shrubs and trees, they create interesting patterns that unify the landscape.

Whether planting a pathway, a hedge or a broad swath of green, there is a good choice for any need.

Lilyturf, growing 8 to 16 inches in height is the most grasslike, does not require mowing and fills in quickly, but can benefit from a late-winter clipping. **Dwarf Mondo** grows 2 to 4 inches tall and is similar to Lilyturf but has thinner leaves and a

finer texture. Once established it is **drought-tolerant** and resistant to pests and disease. **Asiatic Jasmine** is great for shady areas with low maintenance and fast growing characteristics. Asiatic Jasmine typically fills in within three years of planting. The deer resistant **Carex** (sedges) are mostly evergreen shade ornamental grasses that vary in color from green, to blue, to gold/orange or variegated.

Ground covers need an edge barrier to visually or structurally contain them. An established lawn, defined mulched plant bed or low brick, stone or paver edging will work nicely. Although many alternatives can withstand light foot traffic, including stepping stone pathways is a good idea.

Lawns planted with more than turf typically **attract more wildlife** including birds, beneficial insects and butterflies. It is important to remember to remove weeds regularly and water properly during the first year of growth.

The entire yard will benefit from

casual morning walks with a cup of coffee, gardening gloves and hand shears. What a great way to start the day!

For photos of the above mentioned ground covers, visit: <http://www.landfall.org/coa/news.asp>.



Save the Date!

Fall Festival

Fall Festival committee members have already begun planning this year's festival, to be held Saturday, October 8.

The festival, which is now in its 15th year, benefits Landfall's Kenan Chapel and Great Oaks Club. Proceeds help support such programs as free community concerts at the chapel and the Great Oaks Club's beautification projects.

Last year's festival was the most successful ever. The committee wants to make this year's even better: to bring new games for all age groups, to increase the number of items in the silent auction, and offer even more delicious food for sale. To do that, more sponsors and donors for the silent auction need to be recruited from Landfall residents as well as the wider community. Sponsors and donors may be either individuals or businesses.

For more information about the festival or to find out how you can get involved, please visit kenanchapel.com or contact Steve Burdt at 910-256-5895, steveburdt16@gmail.com or Mike Kane at 910-679-4184 kanex5@aol.com.

17th Annual Art Show

Landfall Foundation's annual Art Show is scheduled for Aug. 24th-27 at the Dye Clubhouse. One hundred artists from all over North Carolina will participate in the show; art includes works in oils, watercolors, acrylics, and photography, sculpture in clay, metal, mixed media and wood.

The show runs Wednesday through Saturday from 10am-7pm and a cash bar will be offered from 5-7pm each evening. The event is free and open to the public. The awards will be presented by the judge on Wednesday evening at the preview party which is for Landfall Foundation Gala sponsors, Art Show sponsors and the artists.

We are honored to have the distinguished painter, Dan Beck, as our judge this year. Dan is an internationally recognized oil painter and has won many awards most recently an award at the 2016 National Competition of Oil Painters of America. Proceeds will help to benefit the Landfall Foundation, which supports area nonprofit groups in the greater Wilmington area.

GREAT EGRETS

by Darlyne Johnston

We often see the elegant Great Egrets in our ponds and wetlands around Landfall, but did you know that they were near the **point of extinction** in the late 19th century? They were hunted for their feathers, as they were popular for use as adornments on ladies hats, until plume hunting was largely banned around 1910. This ill fate of the Great Egret sparked conservation movements and some of the first laws to protect birds. It is now estimated that there are over 180,000 breeding birds on this continent.

Life for the Great Egret is in freshwater, brackish and wetlands, but during their breeding season they live in colonies in trees or shrubs with other water birds. Early in the breeding season, the adults grow long plumes on their backs which they raise in courtship displays. The males perform the most, which can involve preening their wings, ducking their head, holding and shaking twigs in their bill, while also stretching the neck. They form **monogamous pairs** each breeding season but it is not known how long these bonds last. The male builds a new nest each year from long sticks and twigs, to the size of 1 foot deep by 3 feet across and up to 100 feet above the ground. The nestlings can be very aggressive with each

other during this time, and will also threaten and attack intruders.

The Great Egret can be seen in the US and as far north as Massachusetts during warm weather, hunting in classic heron fashion by standing in shallow waters as they wade around or stand still waiting for prey to approach. Sometimes they will swim to capture prey or hover over the water and dip for fish.

Most Egrets fly south for winter, some as far as the West Indies or Central America, although not all will migrate, especially the ones already in the southern states.

The Great Egret is a graceful bird which flies slowly, but powerfully, with just 2 wing beats per second at a cruising speed about **25 miles per hour**. The oldest known Great Egret, banded in Ohio, was known to be 22 years and 10 months old. What an amazing long life for a bird!

Today, the Great Egret is the symbol of the National Audubon Society, one of the oldest environmental organizations in North America. Audubon was founded to protect birds from being killed for their feathers, much like the Great Egrets.



Investors Roundtable of Wilmington is back in Landfall!

The Investors Roundtable (IRT) is meeting nine (9) times per year at the Country Club of Landfall. This is an educational forum, which is open to the public, for the presentation and exchange of financial, economic and business information to assist private investors with the management of their individual financial assets. Investors Roundtable, founded in 1994, is not an investment club, and speakers are not making sales presentations. Monthly meetings (the club does not meet in Jan., Jul. & Aug.) are held at the Country Club of Landfall Ballroom, usually, on the first Thursday of the month. Lunch is served at 12:00 noon, followed by the featured speaker and a question and answer period ending by 1:30 p.m. Our speakers are recognized leaders in their respective fields and present on subjects relevant to the current investment environment. Guests are welcome and encouraged at all meetings. Our next meeting will be September 8.

The membership fee (currently \$170 per calendar year) covers the cost of meals and programs. New member annual dues are prorated after February. If you would like to become a member, an application can be found by visiting: <http://investors-roundtable.com/application/>.

A word from your Horticulturist

by Julianne Herrera, COA Horticulturist

One of the most outstanding aspects of the Landfall community is the degree of individuality expressed by the homes and landscapes as you drive the streets. It is this endless variation that gives our team clues as to how to best serve you with recommendations to build or update your landscape in the best way possible.

Despite this community-wide variation, there is a resounding echo as I meet with residents... "It's never been like this..." or "It's always grown there, but now it won't..." or "It wasn't nearly that big when I planted it..." These phrases and those similar all have one thing in common: **Landfall is maturing**. Shrubs are out-growing their beds and trees are shading the turf; the landscapes are aging, but we are here to help.

Just because there are issues, does not mean that you must deal with them all at once. Having a plan that ensures that the right steps are taken at the right time is the most important. Our team members like to walk the property with the homeowner to become acquainted with the space while the resident identifies priorities, concerns and preferences. From there, we can discuss which direction you want your landscape to grow (quite literally), then whether it takes months or years to meet that goal, it is in your control and we can advise how best to achieve those goals and create a space that is enjoyable for years to come.

An issue we have all been addressing with home owners is the resulting **loss of turf** in the landscape. Whether it is due to maturing trees and shrubs blocking the sun that it needs to survive, or other critters making the success we strive for too difficult to grasp. At this point, we have to step back and identify what purpose our turf is serving. In backyards, we understand the desire for a space for kids or grandkids to play or just a nice blanket of grass while getting between here and there, but more often than not we are brought in to look at the front yard that also has these issues.

Turf areas are most often referred to as negative space in landscapes. In contrast, areas with trees and shrubs, walls, statuary and fountains are in turn the positive space, because they have **vertical presence**. It's this "presence" versus "absence" in the landscape that we use to subconsciously draw people from one area to another by laying out subtle clues. Too often though, a landscape plan is implemented with only concern for the positive space, the foundation plants and screening for the driveway becomes the priority, leaving behind negative space as an afterthought. A balance of both positive and negative space is ideal. Regardless of the issues your landscape is facing, we can help find a solution to meet those needs.

By taking the time to structure your landscape with concern for these positive and negative spaces, you can subtly ignite **subconscious cues** that drive people to move through spacious areas, leading to the front door, or use regular shapes or repeating focal points to indicate the direction you should go and will lead you to where you need to be. We can do this with negative areas by creating regular shapes because such intentional shapes do not happen in nature, thus man-made areas imply that following or traversing them will get us to our destination. These negative spaces can be accomplished with turf or groundcovers or just open spaces of mulch contrasted against vertical vegetation.

The point is, that a problem is not always a problem, but a gateway to alternative solutions which continue to allow for individuality.

The Landfall Council of Associations Electronic Voice Delivery and Address Verification Form

Please verify that the COA office has your correct mail and e-mail address.

Landfall property address: _____

Mailing address: _____

E-mail address: _____

Please sign and date this form indicating that you wish to receive the Landfall Voice by electronic delivery. By signature, you acknowledge that it is your responsibility to inform the COA of any mailing or e-mail address changes.

Date: _____ Name: _____

Signature: _____

Upcoming Survey!

The Landfall COA Board would like to offer residents the opportunity to give feedback on the topics of interest and other important issues within our community.

In order to participate in upcoming surveys, please make sure that the COA has your most current email address on file so that you do not miss out. If you would like to verify your contact information, call the COA at 910-256-7651 or stop by our office on Drysdale Drive.

Thank you!



97% to Full CAP for CCL

We have 18 Full Golf Memberships Remaining!!!

As you may know from our article in the October / November Voice, CCL has a goal of 750 Full Memberships. We are only 18 Full memberships away from reaching this goal. After we reach 750 memberships, a waiting list will be established. Now is the time to apply for membership before a waitlist has been created.

In addition to this exciting news, CCL will begin construction of our brand new Sports Center in September. New facilities will include a new resort style pool, children's activity center, and expanded health and wellness facilities. These new amenities will allow us the opportunity to expand services to our membership all in a new, state of the art facility.

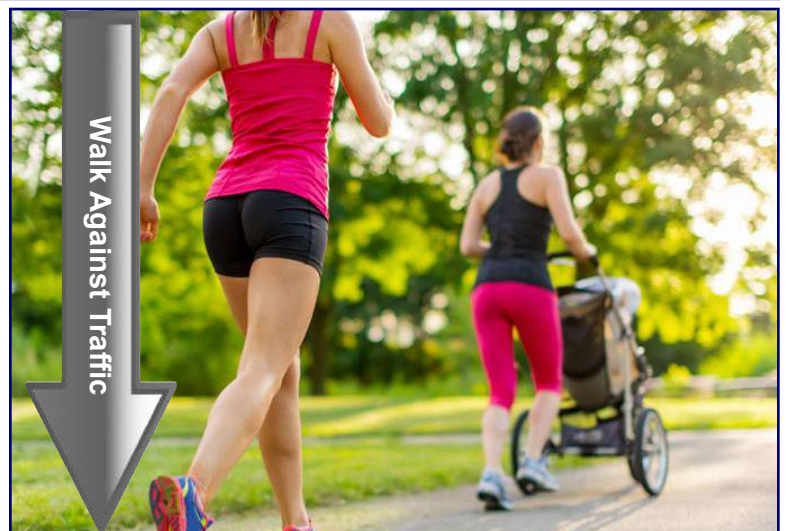
Join as a new Sports or Full member prior to ground breaking and save \$5,000 off the membership initiation fees. Be a part of the excitement- Join Now!! Contact the Membership Team at: (910) 256-8411.

Upcoming Landfall Inspection Reminder

Landfall COA performs an annual (from the street) survey of the entire Landfall community. This year, the survey will be conducted in early June. Please take time to address areas of your homesite that may need maintenance. Make sure that siding, foundations, front strairs and walkways are clean and free of mildew, discoloration or damage. Inspect trim around doors and windows, garage doors, rooflines and porches to make sure there are no areas of peeling paint, wood rot or damage. Inspect the condition of paint on trim, shutters, front doors and railings and apply fresh paint if it is needed. Also, pay special attention to landscaping; making sure that lawns are mowed, overgrown areas are cleaned up, replace any dead plantings, remove any weeds from landscape beds and apply fresh mulch or pine straw in planting beds if it is needed.

For bare areas in lawns, please make decisions for how these will be addressed. Spring is the perfect time to consider new sod, stonework, groundcovers or perhaps converting bare areas into new landscaping beds with attractive plants and shrubs. Please remember to obtain prior ARC approval for changes and modifications to homes and landscapes.

Sharing the Roads



LANDFALL COA
1749 DRYSDALE DRIVE
WILMINGTON, NC 28405

New Owners & Recent Transfers

Gary & Beth O'Connell 2028 Bay Colony Lane Of Westford, MA	Tanya Gold 820 Fox Ridge Lane Of Randleman, NC	Joe & PJ Giaritelli 2134 Deer Island Lane Of Greensboro, NC
Charlie & Kendall Egan 809 Fox Ridge Lane Of Wilmington, NC	Laureen Jakeway 1229 Great Oaks Drive Of Wilmington, NC	Kevin & Michelle Kernan 2029 Balmoral Place Of Nottingham, England
Don & Sue Pevonka 1417 Regatta Drive Of Wilmington, NC	Nancy Thompson 7105 Saybrook Drive Of Raleigh, NC	Bud Blanton 1020 Arboretum Drive Of Wilmington, NC
Anthony & Carole Litwak 920 Arboretum Drive Of Monkton, MD	Bridgett Rowley 612 Bedminister Lane Of Wilmington, NC	Anthony & Carol Nash 525 Moss Tree Drive Of Kinnelon, NJ
Robert & Ann Drescher 1809 South Moorings Of California	Jack & Mary Morgan 1618 Landfall Drive Of Charleston, NC	Wylie Smith 1245 South Moorings Of Florida
Jeff & Melanie Guard 1930 Senova Trace Of Wilmington, NC	2013 & George McGrath 2021 Northstar Place Of Dunwoody, GA	Jeff & Nancy Kellermann 2009 Northstar Place Of Arlington Heights, IL
Matt & Angela Brouse 1929 Sandwedge Place Of Morrisville, NC	Ray & Kristin Lafrenaye 800 Oyster Landing Of Chapel Hill, NC	Chuck & Jeannine Benoit 2103 Lytham Court Of South Hadley, MA

LANDFALL FACTS

Year to date as of May 2016

Owned Lots Paying Dues	1979
Homes Complete	1683
Homes Under Construction	29
ARC Homes in Process	18
Homes for Sale	129
Lots for Sale	59
Homes Sold	36
Lots Sold	11

Editor's Note: If you have comments or suggestions about the Landfall Voice, or if you would like to be a contributor, please contact me at 256-2210 or by email: dakjohnston@gmail.com

THE VOICE IS PRODUCED BY THE COMMUNICATION COMMITTEE:

DARLYNE JOHNSTON,
EDITOR & CHAIRMAN

JEWELL JESSUP

LISA PICKEN

FRANK MADONNA, COA LIAISON

SHELLY KEARNEY, COORDINATOR